



ROADRUNNER
PERFORMANCE
High Performance Hose & Fittings



www.roadrunnerperformance.com

HOSE AND FITTINGS CATALOG - 2020



TABLE OF CONTENTS

Stainless Steel, Liteweight, Push-On & PTFE Hose.....	1
Full Flow Swivel Anodized Hose Fittings.....	2
Anodized Push-On Hose Fittings.....	3
Crimp on Hose Ends for SS & LW Hose.....	4
Crimp on Hose Ends for an PTFE Hose.....	5
Quick Disconnect Fuel Line Settings.....	5
Quick Connect Adapters.....	6
Anodized PTFE Hose Fittings.....	7
Male Pipe & Male AN Thread Hose Ends	8
Flare to Pipe Adapters	8-9
Flare to Flare Adapters	10-11
Bulkhead Adapters.....	12
Flare to Metric Adapters.....	13
Flare to O-Ring Adapters.....	13
Caps & Plugs.....	14
Specialty Adapters	15-16
Carburetor Adapters.....	17
Male Pipe to Barb Adapters	18
Aluminum Hard Line and Adapters.....	18
Fuel Accessories.....	19-20
Tools.....	20
Signs & Clamshell Packaging	21
Terms & Conditions	Back Cover

Order Entry Email: sales@roadrunnerperformance.com • Order Entry Fax: 509.262.9500

Mailing Address: P.O. Box 1679, Simi Valley, CA 93062

Phone: 509.262.9165 • Email: sales@roadrunnerperformance.com

WWW.ROADRUNNERPERFORMANCE.COM

HOSE (ALL HOSE ORDERED IN 100' LENGTHS RECEIVES 5% DISCOUNT)

To order 100-foot lengths, contact sales@roadrunnerperformance.com or call 509.262.9165.



PART NO	AN	(IN)	I.D. (MM)	(IN)	O.D. (MM)	OPERATING PRESS	BURST PRESS
SS04 / SS04BK	-4	7/32	5.4	7/16	11.2	1000 PSI	6000 PSI
SS06 / SS06BK	-6	11/32	8.7	9/16	14.2	1000 PSI	6000 PSI
SS08 / SS08BK	-8	7/16	11.1	11/16	17.1	1000 PSI	5000 PSI
SS10	-10	9/16	14.2	53/64	20.8	1000 PSI	5000 PSI
SS12	-12	11/16	17.4	31/32	24.4	1000 PSI	3750 PSI
SS16	-16	7/8	22.2	13/64	30.5	750 PSI	2500 PSI
SS20	-20	1-1/8"	28.5	1-13/32"	35.81	500 PSI	2000 PSI

STAINLESS STEEL BRAIDED HOSE
Temperature range: -40° C to +150° C

- Available in Stainless Steel outer cover OR Black outer cover. (Add BK for Black to hose part number.)
- Constructed with a reinforced Chlorinated Polyethylene (CPE) synthetic rubber liner with a nylon inner braid.
- Stainless steel outer braid resists abrasion and corrosion.
- For use with fuel systems (like E85), methanol, oils, lubricants, coolant systems and vacuum applications.
- SS Hose is sold in 25 & 50 ft lengths. SS16 & SS20 are cut to Custom Lengths.



PART NO	AN	(IN)	I.D. (MM)	(IN)	O.D. (MM)	OPERATING PRESS	BURST PRESS
LW04 / LW04BK	-4	7/32	5.4	7/16	11.2	500 PSI	2000 PSI
LW06 / LW06BK	-6	11/32	8.7	9/16	14.2	500 PSI	2000 PSI
LW08 / LW08BK	-8	7/16	11.1	11/16	17.1	500 PSI	2000 PSI
LW10 / LW10BK	-10	9/16	14.2	53/64	20.8	500 PSI	2000 PSI
LW12 / LW12BK	-12	11/16	17.4	31/32	24.4	350 PSI	1400 PSI
LW16 / LW16BK	-16	7/8	22.2	13/64	30.5	350 PSI	1400 PSI
LW20 / LW20BK	-20	1-1/8"	28.5	1-13/32"	35.81	350 PSI	1400 PSI

NYLON BRAIDED LITEWEIGHT HOSE
Temperature range: -40° C to +150° C

- Available in Black with Blue Threading or solid Black. (Add BK for Black to end of hose part number.)
- Constructed with a braided nylon outer shield for abrasion resistance and a flexible stainless steel inner core for superior strength embedded in the Chlorinated Polyethylene (CPE) synthetic rubber liner.
- For use with all fuels and fuel systems, including E85, E10, methanol, oils, lubricants and coolant systems.
- LW Hose is sold in 25 & 50 ft lengths. LW16, LW16BK & LW20, LW20BK are cut to custom lengths.



PART NO	AN	(IN)	I.D. (MM)	(IN)	O.D. (MM)	MAXIMUM OPERATING PRESSURE
PLO4 / PLO4BK	-4	.25	6.35	.47	11.94	250 PSI
PLO6 / PLO6BK	-6	.38	9.65	.63	16	250 PSI
PLO8 / PLO8BK	-8	.5	12.7	.75	19.05	250 PSI
PL10 / PL10BK	-10	.63	16	.94	23.88	250 PSI
PL12 / PL12BK	-12	.75	19.05	1.0	25.4	250 PSI

PUSH-LOCK HOSE WITH CPE TUBE COMPOUND
Temperature range: -40° C to +100° C

- Available in Blue & Black. (Add BK for Black to end of hose part number.)
- Designed for use with push on hose fittings. Constructed with a high temperature Chlorinated Polyethylene (CPE) synthetic rubber.
- For use with coolants, oil, air, methanol, and fuel systems, such as E85, E10, lubricants.
- Where temperature exceeds to 158°F, the use of a clamp is recommended.
- Push-Lock Hose is sold in 25 & 50 ft lengths.



PART NO	AN	(IN)	I.D. (MM)	(IN)	O.D. (MM)	OPERATING PRESS	BURST PRESS
TF03 / TF03BK	-3	9/64	3.56	1/4	6.35	4000 PSI	12000 PSI
TF04 / TF04BK	-4	3/16	4.83	5/16	8	4000 PSI	12000 PSI
TF06 / TF06BK	-6	21/64	8.13	27/64	10.92	3000 PSI	10000 PSI
TF08 / TF08BK	-8	27/64	10.67	35/64	13.72	2500 PSI	8000 PSI
TF10 / TF10BK	-10	33/64	12.95	5/8	16	2000 PSI	6000 PSI

PTFE HOSE
Temperature range: -35° C to +250° C

- Available in Stainless Steel outer cover OR Black PVC cover. (Add BK to end of hose part number.)
- Constructed with a PTFE inner liner with 308 stainless steel braid that resists leaks and fumes.
- Recommended for brake, E85, alcohol, nitro, transmission, clutch, nitrous, power steering, oiling, hydraulics and vacuum applications.
- PTFE Hose is sold in 25 & 50 ft lengths.

FULL FLOW SWIVEL HOSE FITTINGS

Add color to end of part number: Red/Blue (RB); Cutting Edge (CE); Nickel Polished (NP); Titanium Black (TiB); Black (BK)

These re-usable couplings are made from 6061-T651 Heat Treated Aluminum. They offer 360 degrees of adjustability after assembly.

STRAIGHT

PART NO.	AN SIZE
AN04-04FJ**	-4
AN06-06FJ**	-6
AN08-08FJ**	-8
AN10-10FJ**	-10
AN12-12FJ**	-12
AN16-16FJ**	-16
AN20-20FJ**	-20



45 DEGREE

PART NO.	AN SIZE
AN04-04FJ45**	-4
AN06-06FJ45**	-6
AN08-08FJ45**	-8
AN10-10FJ45**	-10
AN12-12FJ45**	-12
AN16-16FJ45**	-16
AN20-20FJ45**	-20



90 DEGREE

PART NO.	AN SIZE
AN04-04FJ90**	-4
AN06-06FJ90**	-6
AN08-08FJ90**	-8
AN10-10FJ90**	-10
AN12-12FJ90**	-12
AN16-16FJ90**	-16
AN20-20FJ90**	-20



120 DEGREE

PART NO.	AN SIZE
AN04-04FJ120**	-4
AN06-06FJ120**	-6
AN08-08FJ120**	-8
AN10-10FJ120**	-10
AN12-12FJ120**	-12
AN16-16FJ120**	-16
AN20-20FJ120**	-20



150 DEGREE

PART NO.	AN SIZE
AN04-04FJ150**	-4
AN06-06FJ150**	-6
AN08-08FJ150**	-8
AN10-10FJ150**	-10
AN12-12FJ150**	-12
AN16-16FJ150**	-16
AN20-20FJ150**	-20



180 DEGREE

PART NO.	AN SIZE
AN04-04FJ180**	-4
AN06-06FJ180**	-6
AN08-08FJ180**	-8
AN10-10FJ180**	-10
AN12-12FJ180**	-12
AN16-16FJ180**	-16
AN20-20FJ180**	-20



**Please indicate color when ordering.

ANODIZED PUSH-ON HOSE FITTINGS

Add color to end of part number: Red/Blue (RB); Cutting Edge (CE); Nickel Polished (NP); Titanium Black (TiB); Black (BK)

These push-on hose fittings are easy to assemble, lightweight and provide great performance. The fittings are machined from a high grade aluminum.

STRAIGHT

PART NO.	AN SIZE
PLO4-04FJ**	-4
PLO6-06FJ**	-6
PLO8-08FJ**	-8
PL10-10FJ**	-10
PL12-12FJ**	-12



45 DEGREE

PART NO.	AN SIZE
PL04-04FJ45**	-4
PL06-06FJ45**	-6
PL08-08FJ45**	-8
PL10-10FJ45**	-10
PL12-12FJ45**	-12



90 DEGREE

PART NO.	AN SIZE
PL04-04FJ90**	-4
PL06-06FJ90**	-6
PL08-08FJ90**	-8
PL10-10FJ90**	-10
PL12-12FJ90**	-12



120 DEGREE

PART NO.	AN SIZE
PL04-04FJ120**	-4
PL06-06FJ120**	-6
PL08-08FJ120**	-8
PL10-10FJ120**	-10
PL12-12FJ120**	-12



150 DEGREE

PART NO.	AN SIZE
PL04-04FJ150**	-4
PL06-06FJ150**	-6
PL08-08FJ150**	-8
PL10-10FJ150**	-10
PL12-12FJ150**	-12



180 DEGREE

PART NO.	AN SIZE
PL04-04FJ180**	-4
PL06-06FJ180**	-6
PL08-08FJ180**	-8
PL10-10FJ180**	-10
PL12-12FJ180**	-12



**Please indicate color when ordering.

CRIMP-ON HOSE ENDS FOR SS AND LW HOSE

Re-useable couplings made from 6061-T651 Heat Treated Aluminum. They offer 360 degrees of adjustability after assembly.

STRAIGHT

PART NO.	AN SIZE
CR06-06FJBK	6
CR08-08FJBK	8
CR10-10FJBK	10
CR12-12FJBK	12
CR16-16FJBK	16



45 DEGREE

PART NO.	AN SIZE
CRO6-06FJ45BK	6
CRO8-08FJ45BK	8
CR10-10FJ45BK	10
CR12-12FJ45BK	12
CR16-16FJ45BK	16



90 DEGREE

PART NO.	AN SIZE
CRO6-06FJ90BK	6
CRO8-08FJ90BK	8
CR10-10FJ90BK	10
CR12-12FJ90BK	12
CR16-16FJ90BK	16



180° HOSE ENDS

PART NO.	AN SIZE
CRO6-06FJ180BK	6
CRO8-08FJ180BK	8
CR10-10FJ180BK	10
CR12-12FJ180BK	12
CR16-16FJ180BK	16



CRIMP SLEEVE

PART NO.	AN SIZE
CRSLEEVE-06	6
CRSLEEVE-08	8
CRSLEEVE-10	10
CRSLEEVE-12	12
CRSLEEVE-16	16



rjdrifts • Following



rjdrifts Straight up one of the best and easiest AN fittings I have put together. @roadrunnerperformance killing the game making those easy to assemble pieces!! -

23w

CRIMP BEND HOSE ENDS FOR AN PTFE HOSE

Available in Blue & Black. To Order: Blue-add no color; Black-add BK at end of part number.

These re-useable couplings are made from 6061-T651 Heat Treated Aluminum. 360 degrees of adjustability after assembly.

STRAIGHT

PART NO.	AN SIZE
CTF04-04FJBK	4
CTF06-06FJBK	6
CTF08-08FJBK	8
CTF10-10FJBK	10



90 DEGREE

PART NO.	AN SIZE
CTF04-04FJ90BK	4
CTF06-06FJ90BK	6
CTF08-08FJ90BK	8
CTF10-10FJ90BK	10



45 DEGREE

PART NO.	AN SIZE
CTF04-04FJ45BK	4
CTF06-06FJ45BK	6
CTF08-08FJ45BK	8
CTF10-10FJ45BK	10



CLAMP SLEEVE

PART NO.	AN SIZE
CTFSLEEVE-04	4
CTFSLEEVE-06	6
CTFSLEEVE-08	8
CTFSLEEVE-10	10



PERFORMANCE QUICK DISCONNECT COUPLERS - MALE & FEMALE

QUICK DISCONNECT BRAKE LINE - MALE

PART NO.	AN SIZE	AN BODY SIZE
AN03-03BODY	AN 03	AN 03



QUICK DISCONNECT FUEL LINE - MALE - ALUM/BK

PART NO.	AN SIZE	AN BODY SIZE
AN04-05QDC-MBK	AN 06	AN 5 BODY
AN06-05QDC-MBK	AN 06	AN 5 BODY
AN06-08QDC-MBK	AN 06	AN 8 BODY
AN08-08QDC-MBK	AN 08	AN 8 BODY
AN10-12QDC-MBK	AN 10	AN 12 BODY
AN12-12QDC-MBK	AN 12	AN 12 BODY



Both AN Male Ends are the Same AN SIZE

QUICK DISCONNECT FUEL LINE - FEMALE ALUM/BK

PART NO.	AN SIZE	AN BODY SIZE
AN04-05QDC-FBK	AN 04	AN 5 BODY
AN06-05QDC-FBK	AN 06	AN 5 BODY
AN06-08QDC-FBK	AN 06	AN 8 BODY
AN08-08QDC-FBK	AN08	AN 8 BODY
AN10-12QDC-FBK	AN10	AN 12 BODY
AN12-12QDC-FBK	AN12	AN 12 BODY



QUICK CONNECT ADAPTERS

Available in Blue & Black. To Order: Blue-add no color; Black-add BK at end of part number.

AN TO MALE

PART NO.	AN SIZE	DESCRIPTION
AN06-5/16"-MQC	-6	5/16
AN06-3/8"-MQC	-6	3/8
AN08-3/8"-MQC	-8	3/8



AN TO MALE - 90 DEGREE

PART NO.	AN SIZE	DESCRIPTION
AN06-5/16"-MQC90	-6	5/16
AN06-3/8"-MQC90	-6	3/8
AN08-3/8"-MQC90	-8	3/8



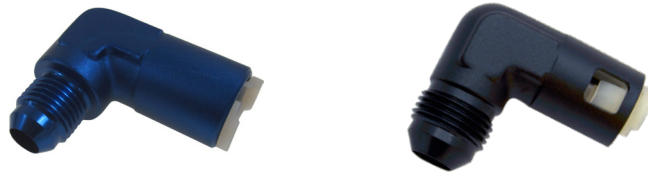
AN TO FEMALE

PART NO.	AN SIZE	DESCRIPTION
AN06-5/16"-FQC	-6	5/16
AN06-3/8"-FQC	-6	3/8
AN08-3/8"-FQC	-8	3/8



AN TO FEMALE - 90 DEGREE

PART NO.	AN SIZE	DESCRIPTION
AN06-5/16"-FQC90	-6	5/16
AN06-3/8"-FQC90	-6	3/8
AN08-3/8"-FQC90	-8	3/8



AN TO FEMALE W/ AL FEMALE INSERT - STRAIGHT

PART NO.	AN SIZE	DESCRIPTION
AN06-5/16"-FQCFI	-6	5/16
AN06-3/8"-FQCFI	-6	3/8
AN08-3/8"-FQCFI	-8	3/8



AN TO FEMALE WITH AL FEMALE INSERT-90 DEGREE

PART NO.	AN SIZE	DESCRIPTION
AN06-5/16"-FQCFI90	-6	5/16
AN06-3/8"-FQCFI90	-6	3/8
AN08-3/8"-FQCFI90	-8	3/8

With Double-Locking Seal (allows more pressure)



FEMALE PLASTIC INSERT (White Only)

PART NO.	AN SIZE	DESCRIPTION
FPI-5/16	-6	5/16
AN06-3/8"-FQCFI90	-6	3/8



ANODIZED PTFE HOSE FITTINGS

Couplings made from 6061-T651 Heat Treated Aluminum. Please indicate color when ordering; add CE, RB, or BK to end of part number.

**Please indicate color when ordering. Add CE, RB or BK to end of part number **Straight, 45°, 90° available in Cutting Edge Black (CE) and Red/Blue (RB) and Black (BK). Extended Bends (120°, 150°, 180°) in Black (BK) ONLY.

STRAIGHT

PART NO.	AN SIZE
TF03-03FJ**	-3
TF04-04FJ**	-4
TF06-06FJ**	-6
TF08-08FJ**	-8
TF10-10FJ**	-10



120 DEGREE -Black Only

PART NO.	AN SIZE
TF03-03FJ120BK	-3
TF04-04FJ120BK	-4
TF06-06FJ120BK	-6
TF08-08FJ120BK	-8
TF10-10FJ120BK	-10



45 DEGREE

PART NO.	AN SIZE
TF03-03FJ45**	-3
TF04-04FJ45**	-4
TF06-06FJ45**	-6
TF08-08FJ45**	-8
TF10-10FJ45**	-10



150 DEGREE -Black Only

PART NO.	AN SIZE
TF03-03FJ150BK	-3
TF04-04FJ150BK	-4
TF06-06FJ150BK	-6
TF08-08FJ150BK	-8
TF10-10FJ150BK	-10



90 DEGREE

PART NO.	AN SIZE
TF03-03FJ90**	-3
TF04-04FJ90**	-4
TF06-06FJ90**	-6
TF08-08FJ90**	-8
TF10-10FJ90**	-10



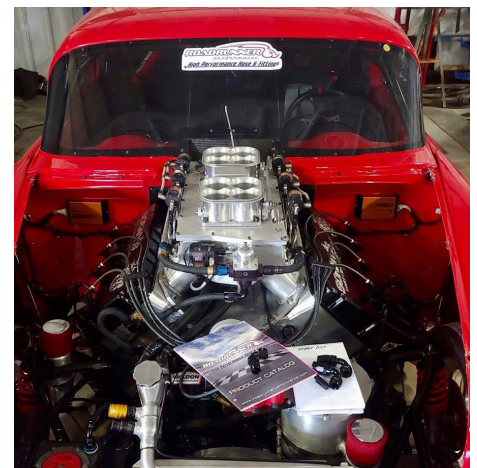
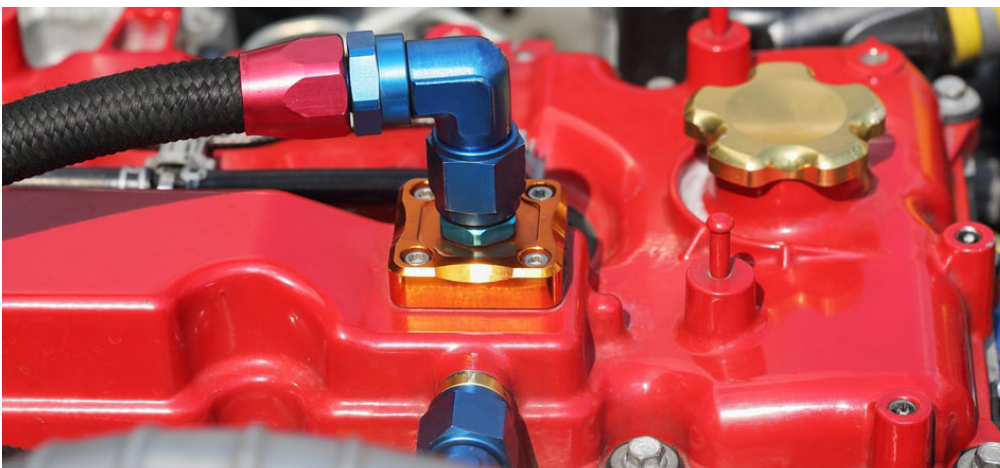
180 DEGREE -Black Only

PART NO.	AN SIZE
TF03-03FJ180BK	-3
TF04-04FJ180BK	-4
TF06-06FJ180BK	-6
TF08-08FJ180BK	-8
TF10-10FJ180BK	-10



REPLACEMENT OLIVE INSERT FOR PTFE FITTINGS

PART NO.	AN SIZE
TF-03OLIVE	-3
TF-04OLIVE	-4
TF-06OLIVE	-6
TF-08OLIVE	-8
TF-10OLIVE	-10



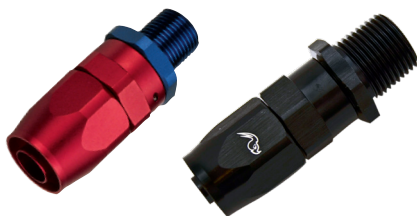
MALE PIPE & MALE AN THREAD HOSE ENDS

Available in Red/Blue and Black. **Please indicate color when ordering. Add RB or BK to end of part number.

MALE PIPE THREADS FORGED

STRAIGHT

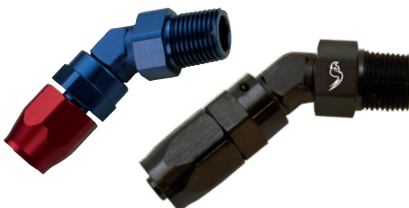
PART NO.	HOSE SIZE	THREAD
AN06-02MS**	-6	1/8" NPT
AN06-04MS**	-6	1/4" NPT
AN06-06MS**	-6	3/8" NPT
AN08-04MS**	-8	1/4" NPT
AN08-06MS**	-8	3/8" NPT



PART NO.	HOSE SIZE	THREAD
AN08-08MS**	-8	1/2" NPT
AN10-06MS**	-10	3/8" NPT
AN10-08MS**	-10	1/2" NPT
AN12-08MS**	-12	1/2" NPT
AN12-12MS**	-12	3/4" NPT

45 DEGREE

PART NO.	HOSE SIZE	THREAD
AN06-02MS45**	-6	1/8" NPT
AN06-04MS45**	-6	1/4" NPT
AN06-06MS45**	-6	3/8" NPT
AN08-04MS45**	-8	1/4" NPT
AN08-06MS45**	-8	3/8" NPT



PART NO.	HOSE SIZE	THREAD
AN08-08MS45**	-8	1/2" NPT
AN10-06MS45**	-10	3/8" NPT
AN10-08MS45**	-10	1/2" NPT
AN12-08MS45**	-12	1/2" NPT
AN12-12MS45**	-12	3/4" NPT

90 DEGREE

PART NO.	HOSE SIZE	THREAD
AN06-02MS90**	-6	1/8" NPT
AN06-04MS90**	-6	1/4" NPT
AN06-06MS90**	-6	3/8" NPT
AN08-04MS90**	-8	1/4" NPT
AN08-06MS90**	-8	3/8" NPT



PART NO.	HOSE SIZE	THREAD
AN08-08MS90**	-8	1/2" NPT
AN10-06MS90**	-10	3/8" NPT
AN10-08MS90**	-10	1/2" NPT
AN12-08MS90**	-12	1/2" NPT
AN12-12MS90**	-12	3/4" NPT

MALE AN THREADS

STRAIGHT

PART NO.	HOSE SIZE	PIPE SIZE
AN06-06MJ**	-6	9/16"-18 AN 6
AN08-08MJ**	-8	3/4"-16 AN 8



PART NO.	HOSE SIZE	PIPE SIZE
AN10-10MJ**	-10	7/8"-14
AN12-12MJ**	-12	1-1/16"-12

FLARE TO PIPE ADAPTERS

Available in Blue and Black. To Order: Blue-add no color; Black-add BK to end of part number.

FLARE TO PIPE TEE

PART NO.	AN SIZE	PIPE SIZE
AN03-02MPT	-3	1/8" NPT
AN04-02MPT	-4	1/8" NPT
AN06-04MPT	-6	1/4" NPT
AN08-06MPT	-8	3/8" NPT
AN10-08MPT	-10	1/2" NPT
AN12-12MPT	-12	3/4" NPT
AN16-16MPT	-16	1" NPT



FLARE TO PIPE RUN TEE

PART NO.	AN SIZE	PIPE SIZE
AN03-02MPRT	-3	1/8" NPT
AN04-02MPRT	-4	1/8" NPT
AN06-04MPRT	-6	1/4" NPT
AN08-06MPRT	-8	3/8" NPT
AN10-08MPRT	-10	1/2" NPT
AN12-12MPRT	-12	3/4" NPT
AN16-16MPRT	-16	1" NPT



FLARE TO PIPE ADAPTERS (CONTINUED)

Available in Blue and Black. To Order: Blue-add no color; Black-add BK to end of part number.

FLARE TO PIPE - 45 DEGREE

PART NO.	AN SIZE	PIPE SIZE
AN03-02MP45	-3	1/8" NPT
AN04-02MP45	-4	1/8" NPT
AN04-04MP45	-4	1/4" NPT
AN06-02MP45	-6	1/8" NPT
AN06-04MP45	-6	1/4" NPT
AN06-06MP45	-6	3/8" NPT
AN06-08MP45	-6	1/2" NPT
AN08-04MP45	-8	1/4" NPT
AN08-06MP45	-8	3/8" NPT
AN08-08MP45	-8	1/2" NPT
AN10-06MP45	-10	3/8" NPT
AN10-08MP45	-10	1/2" NPT
AN10-12MP45	-10	3/4" NPT
AN12-08MP45	-12	1/2" NPT
AN12-12MP45	-12	3/4" NPT
AN16-12MP45	-16	3/4" NPT
AN16-16MP45	-16	1" NPT



FLARE TO PIPE - STRAIGHT

PART NO.	AN SIZE	PIPE SIZE	PART NO.	AN SIZE	PIPE SIZE
AN03-02MP	-3	1/8" NPT	AN08-04MP	-8	1/4" NPT
AN03-04MP	-3	1/4" NPT	AN08-06MP	-8	3/8" NPT
AN04-02MP	-4	1/8" NPT	AN08-08MP	-8	1/2" NPT
AN04-04MP	-4	1/4" NPT	AN08-12MP	-8	3/4" NPT
AN06-02MP	-6	1/8" NPT	AN10-06MP	-10	3/8" NPT
AN06-04MP	-6	1/4" NPT	AN10-08MP	-10	1/2" NPT
AN06-06MP	-6	3/8" NPT	AN10-12MP	-10	3/4" NPT
AN06-08MP	-6	1/2" NPT	AN12-08MP	-12	1/2" NPT
			AN12-12MP	-12	3/4" NPT
			AN12-16MP	-12	1" NPT
			AN16-12MP	-16	3/4" NPT
			AN16-16MP	-16	1" NPT
			AN20-16MP	-20	1" NPT
			AN20-20MP	-20	1 1/4" NPT



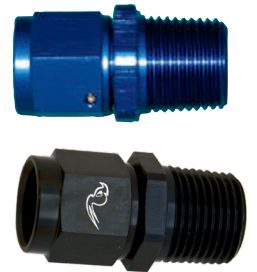
STRAIGHT PIPE BSP

PART NO.	AN SIZE	PIPE SIZE
AN04-1/8X28BSP	-4	1/8"X28
AN06-1/8X28BSP	-6	1/8"X28
AN06-1/4X19BSP	-6	1/4"X19
AN06-3/8X19BSP	-6	1/4"X19
AN06-1/2X14BSP	-6	1/2"X14



AN SWIVEL TO MALE NPT - STRAIGHT

PART NO.	AN SIZE	PIPE SIZE
ANFJ03-02MP	-3	1/8" NPT
ANFJ04-02MP	-4	1/8" NPT
ANFJ04-04MP	-4	1/4" NPT
ANFJ06-02MP	-6	1/8" NPT
ANFJ06-04MP	-6	1/4" NPT
ANFJ06-06MP	-6	3/8" NPT
ANFJ08-04MP	-8	1/4" NPT
ANFJ08-06MP	-8	3/8" NPT
ANFJ08-08MP	-8	1/2" NPT
ANFJ10-06MP	-10	3/8" NPT
ANFJ10-08MP	-10	1/2" NPT
ANFJ12-08MP	-12	1/2" NPT
ANFJ12-12MP	-12	3/4" NPT



FLARE TO PIPE - 90 DEGREE

PART NO.	AN SIZE	PIPE SIZE	PART NO.	AN SIZE	PIPE SIZE
AN03-02MP90	-3	1/8" NPT	AN06-06MP90	-6	3/8" NPT
AN04-02MP90	-4	1/8" NPT	AN06-08MP90	-6	1/2" NPT
AN04-04MP90	-4	1/4" NPT	AN08-04MP90	-8	1/4" NPT
AN06-02MP90	-6	1/8" NPT	AN08-06MP90	-8	3/8" NPT
AN06-04MP90	-6	1/4" NPT	AN08-08MP90	-8	1/2" NPT
			AN10-06MP90	-10	3/8" NPT
			AN10-08MP90	-10	1/2" NPT
			AN10-12MP90	-10	3/4" NPT
			AN12-08MP90	-12	1/2" NPT
			AN12-12MP90	-12	3/4" NPT
			AN16-12MP90	-16	3/4" NPT
			AN16-16MP90	-16	1" NPT



MALE AN TO SWIVEL MALE PIPE

90 DEGREE

PART NO.	AN SIZE	PIPE SIZE
ANMJ03-02MPS90	-3	1/8" NPT
ANMJ04-02MPS90	-4	1/8" NPT
ANMJ04-04MPS90	-4	1/4" NPT
ANMJ06-02MPS90	-6	1/8" NPT
ANMJ06-04MPS90	-6	1/4" NPT
ANMJ06-06MPS90	-6	3/8" NPT
ANMJ08-04MPS90	-8	1/4" NPT
ANMJ08-06MPS90	-8	3/8" NPT
ANMJ08-08MPS90	-8	1/2" NPT
ANMJ10-06MPS90	-10	3/8" NPT
ANMJ10-08MPS90	-10	1/2" NPT
ANMJ12-08MPS90	-12	1/2" NPT
ANMJ12-12MPS90	-12	3/4" NPT



FEMALE AN TO SWIVEL MALE PIPE

90 DEGREE

PART NO.	AN SIZE	PIPE SIZE
ANFJ03-02MPS90	-3	1/8" NPT
ANFJ04-02MPS90	-4	1/8" NPT
ANFJ04-04MPS90	-4	1/4" NPT
ANFJ06-02MPS90	-6	1/8" NPT
ANFJ06-04MPS90	-6	1/4" NPT
ANFJ06-06MPS90	-6	3/8" NPT
ANFJ08-04MPS90	-8	1/4" NPT
ANFJ08-06MPS90	-8	3/8" NPT
ANFJ08-08MPS90	-8	1/2" NPT
ANFJ10-06MPS90	-10	3/8" NPT
ANFJ10-08MPS90	-10	1/2" NPT
ANFJ12-08MPS90	-12	1/2" NPT
ANFJ12-12MPS90	-12	3/4" NPT



FLARE TO FLARE ADAPTERS

Available in Blue and Black. To Order: Blue-add no color; Black-add BK to end of part number.

MALE TO MALE REDUCER

PART NO.	AN SIZE	AN SIZE	PART NO.	AN SIZE	AN SIZE
AN04-03AN	-4	-3	AN12-06AN	-12	-6
AN05-04AN	-5	-4	AN12-08AN	-12	-8
AN06-04AN	-6	-4	AN12-10AN	-12	-10
AN06-05AN	-6	-5	AN16-10AN	-16	-10
AN08-06AN	-8	-6	AN16-12AN	-16	-12
AN10-06AN	-10	-6	AN20-12AN	-20	-12
AN10-08AN	-10	-8	AN20-16AN	-20	-16



FEMALE TO FEMALE SWIVEL

45 DEGREE	PART NO.	AN SIZE
	ANFJ-03FJ45	-3
	ANFJ-04FJ45	-4
	ANFJ-06FJ45	-6
	ANFJ-08FJ45	-8
	ANFJ-10FJ45	-10
	ANFJ-12FJ45	-12
	ANFJ-16FJ45	-16



90 DEGREE	PART NO.	AN SIZE
	ANFJ-03FJ90	-3
	ANFJ-04FJ90	-4
	ANFJ-06FJ90	-6
	ANFJ-08FJ90	-8
	ANFJ-10FJ90	-10
	ANFJ-12FJ90	-12
	ANFJ-16FJ90	-16



FEMALE TO AN MALE SWIVEL

45 DEGREE	PART NO.	AN SIZE
	ANFJ03-03MJ45	-3
	ANFJ04-04MJ45	-4
	ANFJ06-06MJ45	-6
	ANFJ08-08MJ45	-8
	ANFJ10-10MJ45	-10
	ANFJ12-12MJ45	-12
	ANFJ16-16MJ45	-16



90 DEGREE	PART NO.	AN SIZE
	ANFJ03-03MJ90	-3
	ANFJ04-04MJ90	-4
	ANFJ06-06MJ90	-6
	ANFJ08-08MJ90	-8
	ANFJ10-10MJ90	-10
	ANFJ12-12MJ90	-12
	ANFJ16-16MJ90	-16



FLARE ELBOW UNION

45 DEGREE	PART NO.	AN SIZE
	AN03-03AN45	-3
	AN04-04AN45	-4
	AN06-06AN45	-6
	AN08-08AN45	-8
	AN10-10AN45	-10
	AN12-12AN45	-12
	AN16-16AN45	-16



FLARE TO FLARE ADAPTERS (CONTINUED)

Available in Blue and Black. To Order: Blue-add no color; Black-add BK to end of part number.

FLARE ELBOW UNION

90 DEGREE	PART NO.	AN SIZE
	AN03-03AN90	-3
	AN04-04AN90	-4
	AN06-06AN90	-6
	AN08-08AN90	-8
	AN10-10AN90	-10
	AN12-12AN90	-12
	AN16-16AN90	-16



FLARE UNION ADAPTER

PART NO.	AN SIZE
AN03-03AN	-3
AN04-04AN	-4
AN06-06AN	-6
AN08-08AN	-8
AN10-10AN	-10
AN12-12AN	-12
AN16-16AN	-16



FLARE TEE

PART NO.	AN SIZE
AN03-03ANT	-3
AN04-04ANT	-4
AN06-06ANT	-6
AN08-08ANT	-8
AN10-10ANT	-10
AN12-12ANT	-12
AN16-16ANT	-16



AN TEE TO FEMALE SWIVEL

PART NO.	AN SIZE
ANFJ03-ANMJT	-3
ANFJ04-ANMJT	-4
ANFJ06-ANMJT	-6
ANFJ08-ANMJT	-8
ANFJ10-ANMJT	-10
ANFJ12-ANMJT	-12



AN TO FEMALE SWIVEL ON RUN TEE

PART NO.	AN SIZE
ANFJ03-ANMJRT	-3
ANFJ04-ANMJRT	-4
ANFJ06-ANMJRT	-6
ANFJ08-ANMJRT	-8
ANFJ10-ANMJRT	-10
ANFJ12-ANMJRT	-12



AN FEMALE TO AN FEMALE WITH TUBE

PART NO.	AN SIZE
ANFJ04-FJ-TUBE	-4
ANFJ06-FJ-TUBE	-6
ANFJ08-FJ-TUBE	-8
ANFJ10-FJ-TUBE	-10
ANFJ12-FJ-TUBE	-12
ANFJ16-FJ-TUBE	-16



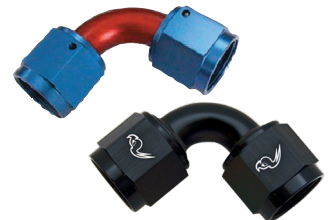
AN FEMALE TO AN FEMALE WITH TUBE

45 DEGREE	PART NO.	AN SIZE
	ANFJ04-FJ-TUBE45	-4
	ANFJ06-FJ-TUBE45	-6
	ANFJ08-FJ-TUBE45	-8
	ANFJ10-FJ-TUBE45	-10
	ANFJ12-FJ-TUBE45	-12
	ANFJ16-FJ-TUBE45	-16



AN FEMALE TO AN FEMALE WITH TUBE

90 DEGREE	PART NO.	AN SIZE
	ANFJ04-FJ-TUBE90	-4
	ANFJ06-FJ-TUBE90	-6
	ANFJ08-FJ-TUBE90	-8
	ANFJ10-FJ-TUBE90	-10
	ANFJ12-FJ-TUBE90	-12
	ANFJ16-FJ-TUBE90	-16



BULKHEAD ADAPTERS

Available in Blue and Black. To Order: Blue-add no color; Black-add BK to end of part number.

FLARE BULKHEAD

STRAIGHT

PART NO.	AN SIZE
AN03-ANBH	-3
AN04-ANBH	-4
AN06-ANBH	-6
AN08-ANBH	-8
AN10-ANBH	-10
AN12-ANBH	-12
AN16-ANBH	-16



90 DEGREE

PART NO.	AN SIZE
AN03-ANBH90	-3
AN04-ANBH90	-4
AN06-ANBH90	-6
AN08-ANBH90	-8
AN10-ANBH90	-10
AN12-ANBH90	-12
AN16-ANBH90	-16



45 DEGREE

PART NO.	AN SIZE
AN03-ANBH45	-3
AN04-ANBH45	-4
AN06-ANBH45	-6
AN08-ANBH45	-8
AN10-ANBH45	-10
AN12-ANBH45	-12
AN16-ANBH45	-16



TEE

PART NO.	AN SIZE
AN03-ANBHT	-3
AN04-ANBHT	-4
AN06-ANBHT	-6
AN08-ANBHT	-8
AN10-ANBHT	-10
AN12-ANBHT	-12
AN16-ANBHT	-16



BULKHEAD TEE ON RUN

TEE	PART NO.	AN SIZE
	AN03-ANBHRT	-3
	AN04-ANBHRT	-4
	AN06-ANBHRT	-6
	AN08-ANBHRT	-8
	AN10-ANBHRT	-10
	AN12-ANBHRT	-12
	AN16-ANBHRT	-16



BULKHEAD NUT

PART NO.	AN SIZE	THREAD
AN03-BHNUT	-3	3/8"-24
AN04-BHNUT	-4	7/16"-20
AN06-BHNUT	-6	9/16"-18
AN08-BHNUT	-8	3/4"-16
AN10-BHNUT	-10	7/8"-14
AN12-BHNUT	-12	1 1/16"-12
AN16-BHNUT	-16	1 5/16"-12



FLARE TO METRIC ADAPTER

Available in Blue & Black. To Order: Blue-add no color; Black-add BK at end of part number.

FLARE TO METRIC STRAIGHT

PART NO.	AN SIZE	PART NO.	AN SIZE	PART NO.	AN SIZE
AN04-10MMx1.0	-4	AN06-18MMx1.5	-6	AN10-18MMx1.5	-10
AN04-10MMx1.25	-4	AN06-20MMx1.5	-6	AN10-20MMx1.5	-10
AN04-10MMx1.5	-4	AN06-22MMx1.5	-6	AN10-22MMx1.5	-10
AN06-10MMx1.0	-6	AN08-12MMx1.5	-8	AN10-24MMx1.5	-10
AN06-10MMx1.25	-6	AN08-14MMx1.5	-8	AN12-14MMx1.5	-12
AN06-10MMx1.5	-6	AN08-16MMx1.5	-8	AN12-16MMx1.5	-12
AN06-12MMx1.0	-6	AN08-18MMx1.5	-8	AN12-18MMx1.5	-12
AN06-12MMx1.25	-6	AN08-20MMx1.5	-8	AN12-20MMx1.5	-12
AN06-12MMx1.5	-6	AN08-22MMx1.5	-8	AN12-22MMx1.5	-12
AN06-14MMx1.5	-6	AN10-14MMx1.5	-10	AN12-24MMx1.5	-12
AN06-16MMx1.5	-6	AN10-16MMx1.5	-10		



FLARE TO O-RING ADAPTERS

Available in Blue & Black. To Order: Blue-add no color; Black-add BK at end of part number.


MALE AN TO SWIVEL MALE O-RING - 90 DEGREE AN TO O-RING


PART NO.	AN SIZE	THREAD
ANMJ06-7/16"-200R90	-6	7/16" - 20
ANMJ06-1/2"-200R90	-6	1/2" - 20
ANMJ06-9/16"-180R90	-6	9/16" - 18
ANMJ06-3/4"-160R90	-6	3/4" - 16
ANMJ06-9/16"-240R90	-6	9/16" - 24
ANMJ06-5/8"-180R90	-6	5/8" - 18
ANMJ08-9/16"-180R90	-8	9/16" - 18
ANMJ08-3/4"-160R90	-8	3/4" - 16
ANMJ08-7/8"-140R90	-8	7/8" - 14
ANMJ08-7/8"-200R90	-8	7/8" - 20
ANMJ10-3/4"-160R90	-10	3/4" - 16
ANMJ10-7/8"-140R90	-10	7/8" - 14
ANMJ10-1-1/16"-120R90	-10	1-1/16" - 12
ANMJ12-7/8"-140R90	-12	7/8" - 14
ANMJ12-1-1/16"-120R90	-12	1-1/16" - 12
ANMJ06-12MMx1-1/4"-OR90	-6	12MM x 1-1/4"
ANMJ06-12MMx1-1/2"-OR90	-6	12MM x 1-1/2"



PART NO.	AN SIZE	THREAD
AN03-030R	-3	3/8" - 24
AN03-040R	-3	7/16" - 20
AN04-030R	-4	3/8" - 24
AN04-040R	-4	7/16" - 20
AN04-060R	-4	9/16" - 18
AN04-080R	-4	3/4" - 16
AN06-040R	-6	7/16" - 20
AN06-060R	-6	9/16" - 18
AN06-080R	-6	3/4" - 16
AN06-100R	-6	7/8" - 14
AN08-060R	-8	9/16" - 18
AN08-080R	-8	3/4" - 16
AN08-100R	-8	7/8" - 14
AN10-060R	-10	9/16" - 18
AN10-080R	-10	3/4" - 16
AN10-100R	-10	7/8" - 14
AN10-120R	-10	1-1/16" - 12
AN10-160R	-10	1-5/16" - 12
AN12-080R	-12	3/4" - 16
AN12-100R	-12	7/8" - 14
AN12-120R	-12	1-1/16" - 12
AN16-120R	-16	1-1/16" - 12
AN16-160R	-16	1-5/16" - 12



 rjdrifts • Following ...

 rjdrifts Installing a few more -10an paired with @roadrunnerperformance fittings. - Things going to look clean!

20w

CAPS & PLUGS

Available in Blue and Black. To Order: Blue-add no color; Black-add BK to end of part number.

AN FLARE PLUG

PART NO.	AN SIZE
AN03-PLUG	-3
AN04-PLUG	-4
AN06-PLUG	-6
AN08-PLUG	-8
AN10-PLUG	-10
AN12-PLUG	-12
AN16-PLUG	-16



AN FLARE CAP

PART NO.	AN SIZE
AN03-CAP	-3
AN04-CAP	-4
AN06-CAP	-6
AN08-CAP	-8
AN10-CAP	-10
AN12-CAP	-12
AN16-CAP	-16



O-RING PLUG

PART NO.
O-RINGPLUG-03
O-RINGPLUG-04
O-RINGPLUG-06
O-RINGPLUG-08
O-RINGPLUG-10
O-RINGPLUG-12
O-RINGPLUG-16



SOCKET PLUG

PART NO.	NPT SIZE
SOCKETPLUG-01	1/16"
SOCKETPLUG-02	1/8"
SOCKETPLUG-04	1/4"
SOCKETPLUG-06	3/8"
SOCKETPLUG-08	1/2"
SOCKETPLUG-12	3/4"
SOCKETPLUG-16	1"



AN CAP FEMALE PLASTIC - RED

PART NO.	AN SIZE
AN03-CAP-P	-3
AN04-CAP-P	-4
AN06-CAP-P	-6
AN08-CAP-P	-8
AN10-CAP-P	-10
AN12-CAP-P	-12
AN16-CAP-P	-16
AN20-CAP-P	-20



AN PLUG MALE PLASTIC - RED

PART NO.	AN SIZE
AN03-PLUG-P	-3
AN04-PLUG-P	-4
AN06-PLUG-P	-6
AN08-PLUG-P	-8
AN10-PLUG-P	-10
AN12-PLUG-P	-12
AN16-PLUG-P	-16
AN20-PLUG-P	-20



SPECIALTY ADAPTERS

Available in Blue & Black. To Order: Blue-add no color; Black-add BK at end of part number.
(unless color specified below)

AN FLARE REDUCER FEMALE/MALE

PART NO.	ORB	AN
ANFJ03-04MJOR	-3	-4
ANFJ03-06MJOR	-3	-6
ANFJ04-03MJOR	-4	-3
ANFJ04-06MJOR	-4	-6
ANFJ04-08MJOR	-4	-8
ANFJ06-03MJOR	-6	-3
ANFJ06-04MJOR	-6	-4
ANFJ06-08MJOR	-6	-8
ANFJ06-10MJOR	-6	-10
ANFJ08-04MJOR	-8	-4
ANFJ08-06MJOR	-8	-6
ANFJ08-10MJOR	-8	-10
ANFJ08-12MJOR	-8	-12
ANFJ10-04MJOR	-10	-4
ANFJ10-06MJOR	-10	-6
ANFJ10-08MJOR	-10	-8
ANFJ10-12MJOR	-10	-12
ANFJ10-16MJOR	-10	-16
ANFJ12-08MJOR	-12	-8
ANFJ12-10MJOR	-12	-10
ANFJ12-16MJOR	-12	-16
ANFJ16-12MJOR	-16	-12



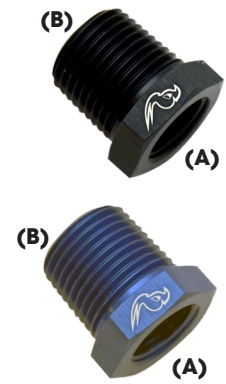
AN TO INVERTED FLARE

PART NO.	THREAD SIZE
AN06-7/16"-24INV	7/16"-24
AN06-1/2"-20INV	1/2"-20
AN06-5/8"-18INV	5/8"-18
AN06-11/16"-18INV	11/16"-18
AN08-1/2"-20INV	1/2"-20
AN08-5/8"-18INV	5/8"-18



NPT BUSHING REDUCER

PART NO.	NPT (A)	NPT (B)
MP04-02BR	1/8	1/4
MP06-02BR	1/8	3/8
MP06-04BR	1/4	3/8
MP08-02BR	1/8	1/2
MP08-04BR	1/4	1/2
MP08-06BR	3/8	1/2
MP12-04BR	1/4	3/4
MP12-06BR	3/8	3/4
MP12-08BR	1/2	3/4



OIL COOLER ADAPTER - Black Only

PART NO.	AN SIZE
OILA04-22MX1.5	-4
OILA06-22MX1.5	-6
OILA08-22MX1.5	-8
OILA10-22MX1.5	-10
OILA12-22MX1.5	-12
OILA16-22MX1.5	-16



FEMALE AN TO MALE AN W/PORT

PART NO.	AN SIZE
ANFJ04-04MJ-P	-4
ANFJ06-06MJ-P	-6
ANFJ08-08MJ-P	-8



MALE AN TO MALE AN WITH 1/8" PORT IN HEX

PART NO.	AN SIZE
ANMJ03-03MJ-PBK	-3
ANMJ04-04MJ-PBK	-4
ANMJ06-06MJ-PBK	-6
ANMJ08-08MJ-PBK	-8



SPECIALTY ADAPTERS (CONTINUED)

Available in Blue & Black. To Order: Blue-add no color; Black-add BK at end of part number.
(unless color specified below)

MALE PIPE COUPLER

PART NO.	NPT SIZE
MP02-02MP	1/8
MP04-04MP	1/4
MP06-06MP	3/8
MP08-08MP	1/2
MP12-12MP	3/4
MP16-16MP	1



FEMALE PIPE COUPLER

PART NO.	PIPE SIZE
FP02-COUP	1/8"NPT
FP04-COUP	1/4"NPT
FP06-COUP	3/8"NPT
FP08-COUP	1/2"NPT
FP12-COUP	3/4"NPT
FP16-COUP	1"NPT



FEMALE TEE

PART NO.	AN SIZE
FJ03-T	-3
FJ04-T	-4
FJ06-T	-6
FJ08-T	-8
FJ10-T	-10
FJ12-T	-12



FEMALE PIPE TEE

PART NO.	PIPE SIZE
FP02-T	1/8"NPT
FP04-T	1/4"NPT
FP06-T	3/8"NPT
FP08-T	1/2"NPT
FP12-T	3/4"NPT



FEMALE PIPE COUPLER - 90 DEGREE

PART NO.	AN SIZE
FP02-02FP90	-2
FP04-04FP90	-4
FP06-06FP90	-6
FP08-08FP90	-8



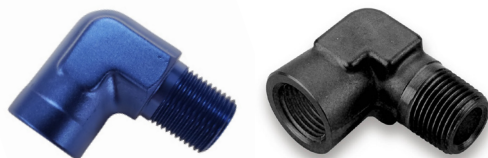
NPT FEMALE TO MALE NPT - 45 DEGREE

PART NO.	AN SIZE
FP02-02MP45	-2
FP04-04MP45	-4
FP06-06MP45	-6
FP08-08MP45	-8



NPT FEMALE TO MALE NPT - 90 DEGREE

PART NO.	AN SIZE
FP02-02MP90	-2
FP04-04MP90	-4
FP06-06MP90	-6
FP08-08MP90	-8



CARBURETOR ADAPTERS

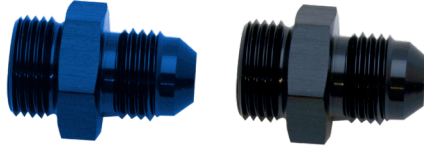
Available in Blue and Black. To Order: Blue-add no color; Black-add BK to end of part number.

20 THREAD

6 AN MALE TO 5/8

PART NO.

AN06-5/8-20



6 AN MALE TO 1

PART NO.

AN06-1-20



6 AN MALE TO 7/8 & 8 AN TO 7/8 (Regular and Long)

PART NO.

AN06-7/8-20

AN08-7/8-20

AN06-7/8-20L

AN08-7/8-20L



POWER STEERING/FUEL INJ O-RING

PART NO.

AN06-14mmx1.5OR

AN06-16mmx1.5OR

AN06-18mmx1.5OR



6 AN MALE TO 9/16 - 24 THREAD

PART NO.

AN06-9/16-24



FUEL INJ. METRIC O-RING ADAPTER

PART NO.

AN06-14mmx1.5FOR

AN06-16mmx1.5FOR



PART NO.

AN06-9/16-24L



DUAL FEED CARBURETOR EXTENDED ADAPTER

PART NO.

AN06-7/8-20extS

AN06-7/8-20extL

AN08-7/8-20extS

AN08-7/8-20extL



DUAL FEED CARBURETOR KITS

PART NO.

DFK-600**

DFK-800**

Billet Dual Feed 4150/4150HP Fuel Line Kit

Swivel-Seal billet single feed fuel line kit that fits Holley 4150/4150HP models with 7/8-20 threads and 9.5" Center to Center inlets available in AN6 and AN8



** Available in Black (BK), Red/Blue (RB), Nickel Polished (NP)

MALE PIPE TO BARB ADAPTERS

Available in Blue and Black. To Order: Blue-add no color; Black-add BK to end of part number.

PIPE TO BARB

STRAIGHT

PART NO.	PIPE SIZE	HOSE SIZE
MP02-04BARB	1/8" NPT	-4
MP04-06BARB	1/4" NPT	-6
MP06-08BARB	3/8" NPT	-8
MP08-10BARB	1/2" NPT	-10
MP12-12BARB	3/4" NPT	-12



45 DEGREE

PART NO.	PIPE SIZE	HOSE SIZE
MP02-04BARB45	1/8" NPT	-4
MP04-06BARB45	1/4" NPT	-6
MP06-08BARB45	3/8" NPT	-8
MP08-10BARB45	1/2" NPT	-10
MP12-12BARB45	3/4" NPT	-12



90 DEGREE

PART NO.	PIPE SIZE	HOSE SIZE
MP02-04BARB90	1/8" NPT	-4
MP04-06BARB90	1/4" NPT	-6
MP06-08BARB90	3/8" NPT	-8
MP08-10BARB90	1/2" NPT	-10
MP12-12BARB90	3/4" NPT	-12



HARD LINE ADAPTERS

TUBE NUT

PART NO.	TUBE
AN03-TNUT	3/16"
AN04-TNUT	1/4"
AN06-TNUT	3/8"
AN08-TNUT	1/2"
AN10-TNUT	5/8"
AN12-TNUT	3/4"



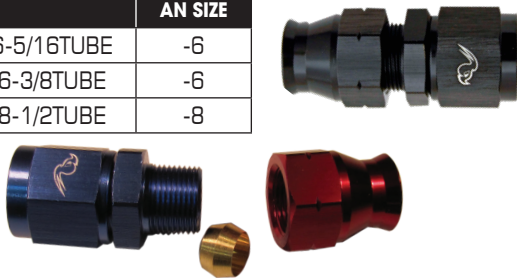
TUBE SLEEVE

PART NO.	TUBE
AN03-TSLV	3/16"
AN04-TSLV	1/4"
AN05-TSLV	5/16"
AN06-TSLV	3/8"
AN08-TSLV	1/2"
AN10-TSLV	5/8"
AN12-TSLV	3/4"



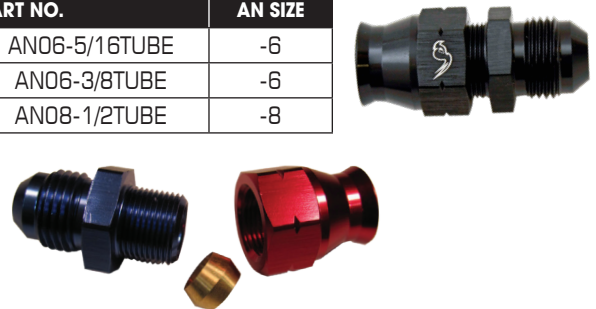
FEMALE AN TO TUBE

PART NO.	AN SIZE
ANFJ06-5/16TUBE	-6
ANFJ06-3/8TUBE	-6
ANFJ08-1/2TUBE	-8



MALE AN TO TUBE

PART NO.	AN SIZE
AN06-5/16TUBE	-6
AN06-3/8TUBE	-6
AN08-1/2TUBE	-8



OLIVE INSERT FOR TUBE FITTINGS

PART NO.	AN SIZE
AN06-OLIVE-05	-6
AN06-OLIVE-06	-6
AN08-OLIVE-08	-8



ALUMINUM HARD LINE COIL LINE

PART NO.	TUBE SIZE
ALHL-05	5/16
ALHL-06	3/8
ALHL-08	1/2



Price per foot. Available in raw aluminum or black hard anodized. 250 PSI Working PSI. Sold in 25- & 50-foot coils.

FUEL ACCESSORIES

Available in Blue and Black. To Order: Blue-add no color; Black-add BK to end of part number.

FUEL ACCESSORIES

FUEL FILTER

PART NO.

FF-06**

FF-08**

Fuel Filters include
FF-ELMT30 (30-micron
bronze element)

**Indicate color: BL-Blue; BK-Black; RD-Red; NP-Nickel Polished



BILLET FUEL FILTER

PART NO.

AN10-10BFF

**indicate color: BL-Blue; BK-Black



BRONZE ELEMENT

PART NO.

FF-ELMT30

FF-ELMT150



FUEL BLOCK

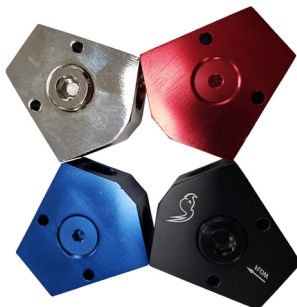
PART NO.

PIPE SIZE

FB-6-6** 3/8 IN 3/8 OUT

FB-8-6** 1/2 IN 3/8 OUT

FB-8-8** 1/2 IN 1/2 OUT



Available Colors: Blue (BL); Red (RD); Nickel Polished (NP); Black (BK)

Y-ADAPTERS

PART NO.

A

B

Y-ADAPTER03-03 -03 -03

Y-ADAPTER04-03 -04 -03

Y-ADAPTER04-04 -04 -04

Y-ADAPTER06-04 -06 -04

Y-ADAPTER06-06 06 -06

Y-ADAPTER08-06 -08 -06

Y-ADAPTER08-08 -08 -08

Y-ADAPTER10-08 10 -08

Y-ADAPTER10-10 -10 -10

Y-ADAPTER12-10 -12 -10

Y-ADAPTER12-12 12 -12

Y-ADAPTER16-16 16 -16



FUEL CELL FITTINGS

PART NO.

TUBE SIZE

FUELCELL-06BK -6

FUELCELL-08BK -8

FUELCELL-10BK -10

FUELCELL-12BK -12



Available in Black Only

TANK WELDS

MALE

PART NO.

AN SIZE

TWM-04 -4

TWM-06 -6

TWM-08 -8

TWM-10 -10

TWM-12 -12

TWM-16 -16

TWM-20 -20

FEMALE

PART NO.

THREAD

TWF-02 1/8" NPT

TWF-04 1/4" NPT

TWF-06 3/8" NPT

TWF-08 1/2" NPT

TWF-12 3/4" NPT



HOSE FINISHERS

PART NO.

AN SIZE

HF-04** -4

HF-06** -6

HF-08** -8

HF-10** -10



PART NO.

AN SIZE

HF-12** -12

HF-16** -16

HF-24** -24

**indicate color: BL - Blue; BK - Black; RD-Red; NP-Nickel Polished

HOSE SEPARATORS

PART NO.

SIZE

HS-03 1/4"

HS-04 7/16"

HS-05 1/2"

HS-06 17/32"

HS-07 9/16"

HS-08 5/8"

HS-10 3/4"

HS-12 7/8"



Available Colors: Blue (BL); Red (RD); Nickel Polished (NP); Black (BK)

ADEL CUSHIONED P-CLAMPS

PART NO.

I.D.

ADELCLAMP-03BK 3/16" 4.8mm

ADELCLAMP-04BK 1/4" 6.4mm

ADELCLAMP-05BK 5/16" 7.9mm

ADELCLAMP-06BK 3/8" 9.5mm

ADELCLAMP-08BK 1/2" 12.7mm

ADELCLAMP-09BK 9/16" 14.3mm

ADELCLAMP-10BK 5/8" 15.9mm

ADELCLAMP-12BK 3/4" 19.1mm

ADELCLAMP-16BK 1" 25.4mm

ADELCLAMP-18BK 1-1/8" 28.6mm

ADELCLAMP-20BK 1-1/4" 31.8mm



FUEL ACCESSORIES (CONTINUED)

Available in Blue and Black. To Order: Blue-add no color; Black-add BK to end of part number.

ONE WAY CHECK VALVE

PART NO.	AN SIZE
AN06-CKVALVE	-6
AN08-CKVALVE	-8
AN10-CKVALVE	-10



**Black Only

AN MALE BALL VALVE

PART NO.	AN SIZE
N06-06SOVALVE*	-6
AN08-08SOVALVE*	-8
AN10-10SOVALVE*	-10



**indicate color: BL - Blue; BK - Black

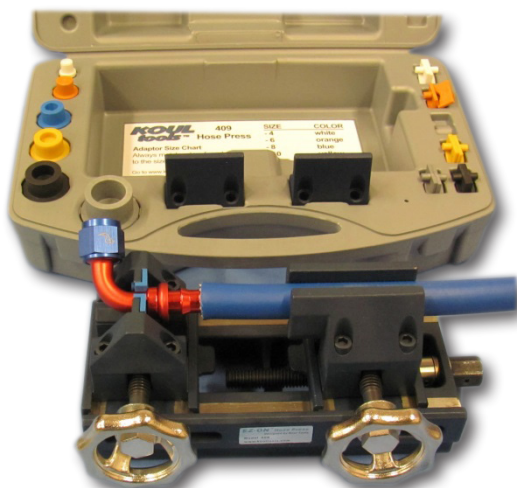
TOOLS

Available in Blue and Black. To Order: Blue-add no color; Black-add BK to end of part number.

KOUL TOOL

PART NO.
KT1

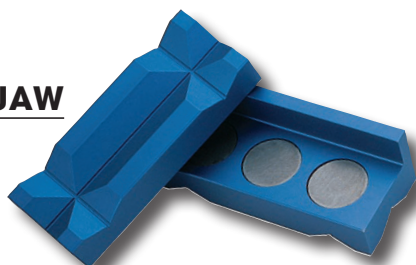
The Koul Tool installs push-on hose fittings in seconds.



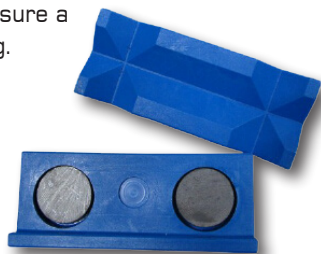
ALUMINUM VICE JAW

PART NO.
VJ-1
VJ-2

The solid one piece billet aluminum Vice Jaws are a must for the professional. Built with super powerful magnet to ensure a safe, secure grip when assembling.



The VJ-2 Plastic Vice Jaw is suggested for assembling larger size AN fittings.



AN WRENCH WHEELIE BAR



PART NO.
WR-WHEELIE-BAR

AN ADJUSTABLE WRENCH -Black Only



Special Roadrunner Performance Design

PART NO.
WR-ADJBK

Adjustable up to size 16.

AN ALLOY WRENCHES

PART NO.	AN SIZE
WR-04	-4
WR-06	-6
WR-08	-8
WR-10	-10
WR-12	-12
WR-16	-16
WR-SET	SET OF 6pcs
WR-20	-20



**Indicate color: Note: Size 20 wrench not in set SET: BK - Black; MC - Multi Color. INDIV. WRENCHES: BK - Black; BL - Blue.

TOOLS

HOSE INSTALLATION KIT



PART NO.
HI-1

See website for HI-1 Tool assembly instructions.

ROADRUNNER COLOR DISPLAY SIGN

30" X 10"

PART NO.
RRSIGN-1

CORRUGATED PLASTIC
WITH VELCRO FASTENERS



ROADRUNNER AUTOMOTIVE DECAL

24.25" X 5.5"

9.5" X 3"

PART NO.
RRDECAL-1

PART NO.
RRDECAL-2



CLAMSHELL DISPLAYS (sold at cost)

NO.	Overall Size	Cavity Size
CS-A	2.8" X 4"	1.4" X 2.4"
CS-B	3.9" X 5.8"	2.5" X 3.1"
CS-C	4.7" X 6.25"	3.7" X 4.1"
CS-D	8" X 8"	4.6" X 7"

**ALL SIZES ARE SHOWN
ON DISPLAY BOARD**



WINDOW DECAL

16" X 5"

PART NO.
WD-1



ROADRUNNER BOUQUET STICKER

6" x 6"

PART NO.
RRSTICKERBOUQ



WARRANTY:

Products shall be free from defects in material and workmanship for a period of 90 days after shipment. If the product purchased is defective in any way during the 90-day period, please contact Roadrunner Performance for an RGA number to return the product for a full evaluation. Roadrunner Performance will replace defective product at no charge to the customer. This comprises the entire warranty and Roadrunner Performance makes no other claim.

TERMS AND CONDITIONS

FREIGHT POLICY:

SINGLE SHIPMENT ORDERS QUALIFY FOR PREPAID FREIGHT AS FOLLOWS: NET ORDER VALUE OF \$300+ WILL SHIP PREPAID (US ONLY); AND ORDERS OF \$400+ (CANADA) WILL BE SHIPPED PREPAID. HOWEVER, FOR ORDERS INCLUDING HOSE THAT ARE SHIPPED USPS, ROADRUNNER WILL PAY FOR ALL SHIPPING CHARGES UP TO THE AMOUNT OF A LARGE RATE BOX (APPROX., \$20); FOR ORDERS WITH HOSE COILS TOO LARGE TO FIT INTO A USPS PRIORITY LARGE FLAT RATE BOX, CUSTOMER WILL PAY ACTUAL FREIGHT CHARGES ABOVE \$20. ROADRUNNER PERFORMANCE SELECTS ROUTING AND CARRIER FOR ALL PREPAID SHIPMENTS. ALL BACK ORDERS ARE SHIPPED PREPAID.

PAYMENT TERMS:

2% 15, NET 30. A 3% SERVICE CHARGE WILL BE ADDED ON TO ANY PAYMENTS THAT ARE 31+ DAYS PAST DUE FROM DATE ON INVOICE. CHECKS ARE ACCEPTED FOR PAYMENT. NO CASH PAYMENTS. ORDERS PAID VIA CREDIT CARD WILL BE CHARGED A \$3 TRANSACTION FEE. CREDIT TERMS MAY BE ESTABLISHED UPON SUBMISSION & APPROVAL OF A COMPLETED CREDIT APPLICATION. PLEASE CONTACT ROADRUNNER PERFORMANCE FOR MORE INFORMATION. ANY PAST DUE BALANCES MUST BE SATISFIED PRIOR TO NEW ORDER SHIPMENTS.

RETURNS:

CONTACT ROADRUNNER PERFORMANCE TO REQUEST AN RGA (RETURNS GOOD AUTHORIZATION) NUMBER PRIOR TO RETURNING ANY PRODUCTS. THE RGA NUMBER MUST APPEAR ON ALL PAPERWORK. PRODUCT BEING RETURNED FOR CREDIT MUST BE IN SALEABLE CONDITION AND FREIGHT MUST BE PREPAID. A SEMI-ANNUAL INVENTORY ADJUSTMENT WILL BE ALLOWED WITH AN OFFSETTING ORDER OF EQUAL OR GREATER VALUE. CREDIT BALANCES CAN BE OFFSET BY PURCHASES ONLY.

CHANGES:

PRICES AND SPECIFICATIONS ARE SUBJECT TO CHANGE WITHOUT PRIOR NOTICE.

ORDER ENTRY EMAIL:

Email: sales@roadrunnerperformance.com or Fax: 509.262.9500

All orders and pricing confirmed on same day; if received by 3pm.

MAILING ADDRESS:

Roadrunner Performance
P.O. Box 1679, SIMI VALLEY, CA 93062
PACKAGES: 665 EAST LOS ANGELES AVENUE, UNIT A,
SIMI VALLEY, CA 93065

FAX (509) 262-9500 • PHONE (509) 262-9165

sales@roadrunnerperformance.com

www.roadrunnerperformance.com



FAMILY OWNED & OPERATED

